

SECURE PLASTIC CONTAINERS

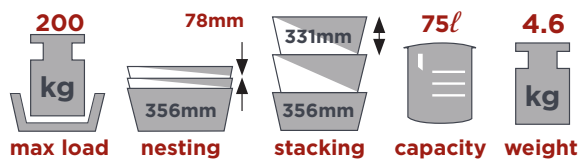
Mr Shelf products fall into the following categories i.e. Jumbo Bins, Environmental Refuse Bins, Storage Bins, Secure Plastic Containers and Storage Crates & Containers.

Each category offers practical, durable systems that are designed to function efficiently under the challenging conditions found within the Southern African retail, industrial, agricultural and environmental markets.

Using a multi-focus team approach, the sales, marketing and manufacturing departments are fully integrated and trained to find solutions that meet the customer's needs and expectations.

Features

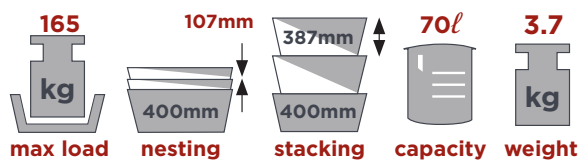
- 5 available sizes form an integrated system.
- Capacities from 6.4 litres up to 75 litres.
- Stackable, nestable and compatible with pallets and dollies.
- Secure enough for heavy duty transit.
- Flat base makes them conveyor friendly.
- The containers are designed to use tamperproof seals and locks.
- Hinged lids.



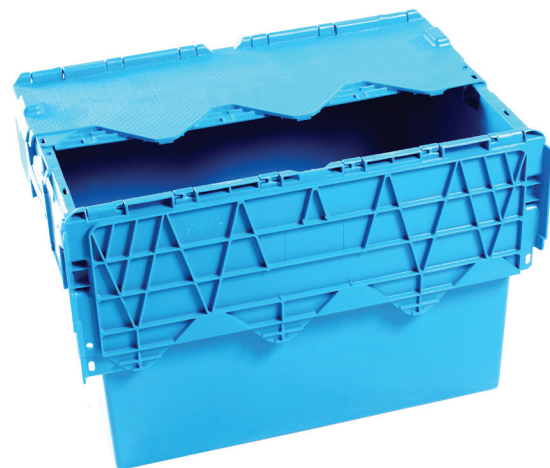
Code:	AT704604
Material:	Polypropylene
Ext. Top:	714 x 465 x 356 mm (H)
Int. Base:	598 x 375 x 307 mm (H)
Carrying Load:	30 kg
Max Load on Base:	200 kg
Stack Height:	331 mm
Nest Height:	78%
Colour:	■ ■



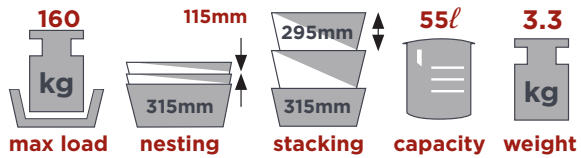
75 Litre Container



Code:	CT4512
Material:	Polypropylene
Ext. Top:	600 x 400 x 400 mm (H)
Int. Base:	521 x 343 x 375 mm (H)
Carrying Load:	28 kg
Max Load on Base:	165 kg
Stack Height:	387 mm
Nest Height:	73%
Colour:	■ ■



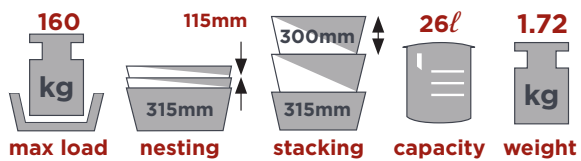
70 Litre Container



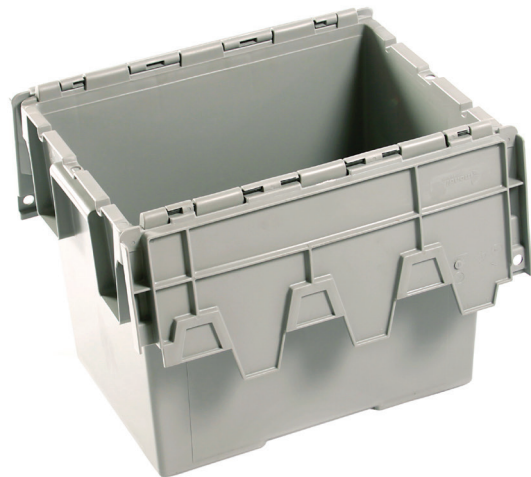
Code:	C1573
Material:	Polypropylene
Ext. Top:	594 x 396 x 315 mm (H)
Int. Base:	510 x 338 x 280 mm (H)
Carrying Load:	22 kg
Max Load on Base:	160 kg
Stack Height:	295 mm
Nest Height:	63%
Colour:	



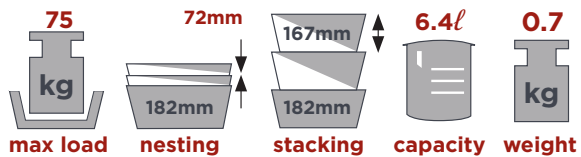
55 Litre Container



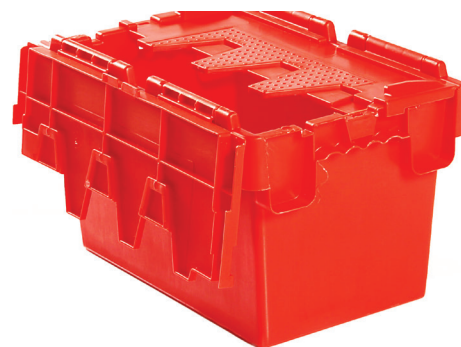
Code:	C1609
Material:	Polypropylene
Ext. Top:	400 x 297 x 315 mm (H)
Int. Base:	342 x 235 x 280 mm (H)
Carrying Load:	10 kg
Max Load on Base:	160 kg
Stack Height:	300 mm
Nest Height:	63%
Colour:	



26 Litre Container



Code:	C7005
Material:	Polypropylene
Ext. Top:	300 x 200 x 182 mm (H)
Int. Base:	250 x 155 x 157 mm (H)
Carrying Load:	10 kg
Max Load on Base:	75 kg
Stack Height:	167 mm
Nest Height:	60%
Colour:	



6.4 Litre Container

Please note that black containers are manufactured from recycled raw material. Please consider this in your application. We will not be held accountable for breakages, or guarantee black recycled products.

MAKE YOUR SPACE WORK FOR YOU.

Toll Free 0861 MRSHELF or 0861 677435
www.mrshelf.co.za

MR. SHELF