

# TOP RETRIEVAL FILING SYSTEMS

**Mr Shelf** has products that save space and time in the workplace by focusing on quick and easy accessibility of information. A local design coupled with innovation and superior quality software resulting in an information storage system that is attractive, effective and economical.

## Features

- All cabinets are fitted with a precision engineered steel internal frame.
- All cabinets are fitted with 103% extension, 3 part roller bearing drawer runners.
- The drawer runners have a load bearing capacity of 90kg per pair.
- All cabinets are fitted with anti-tilt mechanisms – can only open 1 drawer at a time.
- All cabinets have a central locking mechanism.
- All cabinets have adjustable ferrules to cater for uneven floors.
- Each drawer holds 15 A4 containers.
- Each drawer has up to 1.5 linear meters of filing.
- Base plates and utility drawers are available.

**Cabinets to house suspended pockets, CD's, cheque books, X-rays, Lever Arch files etc., are available on special request. Top Retrieval Cabinets have a 10 year guarantee.**



Drawer Runners  
Anti-Tilt (Lock Rod)



Drawer Runners  
Anti-Tilt (Runner)



Drawer Runners  
90kgs, 103% Extension, Anti-Tilt



Complete Metal Frame  
Including Top, Bottom and Uprights

## Finishes:

### Laminate



**Burgundy Mahogany** **Bodensee Cherry** **Folkstone Grey** **Bavarian Beech** **Natural Oak** **Vancouver Maple**

**NOTE:** PLEASE be advised that alternative cladding options are available on request HOWEVER must be quoted accordingly.

### Veneer



**Oak** **Cherry** **Maple** **Beech** **Mahogany**

## PLEASE NOTE: (E & OE)

- Due to the printing process, true colours may vary from what is shown in the catalogue
- Details correct at the time of going to print

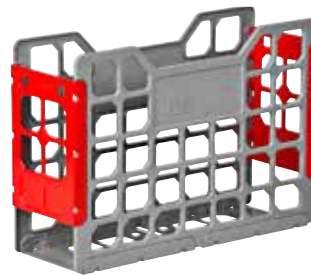
## Handle types

### Used on laminate cabinets

- Silver oval arch
- Black oval arch
- Black PVC
- Brown PVC



## Cabinets to accommodate A4 containers






A4 container

	Code	Description	Width (mm)	Depth (mm)	Height (mm)	Capacity in Cabinet
<b>MICRO - 467mm WIDE</b>						
	2MICPTA4C	2 draw micro with top	467	595	715	10 x A4 Cont.
	2MICTTA4C	2 draw micro with top, with shallow top drawer	467	595	715	10 x A4 Cont.
	2MICPUA4C	2 draw micro undercounter no top	467	595	699	10 x A4 Cont.
	2MICTUA4C	2 draw micro undercounter no top, with shallow top draw	467	595	699	10 x A4 Cont.
	3MICPTA4C	3 draw micro	467	595	969	15 x A4 Cont.
	4MICPTA4C	4 draw micro	467	595	1217	20 x A4 Cont.
	5SMICTA4C	5 draw short micro	467	595	1350	25 x A4 Cont.
	5MICPTA4C	5 draw micro	467	595	1465	25 x A4 Cont.
6MICPTA4C	6 draw micro	467	595	1584	30 x A4 Cont.	
<b>MINI - 798mm WIDE</b>						
	2MNIPTA4C	2 draw mini with top	798	595	715	20 x A4 Cont.
	2MNIITA4C	2 draw mini with top, with shallow top drawer	798	595	715	20 x A4 Cont.
	2MNIPTUA4C	2 draw mini undercounter no top	798	595	699	20 x A4 Cont.
	2MNIITUA4C	2 draw mini undercounter no top, with shallow top drawer	798	595	699	20 x A4 Cont.
	3MNIPTA4C	3 draw mini	798	595	969	30 x A4 Cont.
	4MNIPTA4C	4 draw mini	798	595	1217	40 x A4 Cont.
	5SMNITA4C	5 draw short mini	798	595	1350	50 x A4 Cont.
	5MNIPTA4C	5 draw mini	798	595	1465	50 x A4 Cont.
6MNIPTA4C	6 draw mini	798	595	1584	60 x A4 Cont.	
<b>MAXI - 1128mm WIDE</b>						
	2MAXPTA4C	2 draw maxi with top	1128	595	715	30 x A4 Cont.
	2MAXTTA4C	2 draw maxi with top, with shallow top drawer	1128	595	715	30 x A4 Cont.
	2MAXPUA4C	2 draw maxi undercounter no top	1128	595	699	30 x A4 Cont.
	2MAXTUA4C	2 draw maxi undercounter no top, with shallow top drawer	1128	595	699	30 x A4 Cont.
	3MAXPTA4C	3 draw maxi	1128	595	969	45 x A4 Cont.
	4MAXPTA4C	4 draw maxi	1128	595	1217	60 x A4 Cont.
	5SMAXTA4C	5 draw short maxi	1128	595	1350	75 x A4 Cont.
	5MAXPTA4C	5 draw maxi	1128	595	1465	75 x A4 Cont.
6MAXPTA4C	6 draw maxi	1128	595	1721	90 x A4 Cont.	

## Cabinets to accommodate A4 suspended pockets



A4 suspended pocket

	Code	Description	Width (mm)	Depth (mm)	Height (mm)	Capacity in Cabinet
<b>MICRO - 467mm WIDE</b>						
	2MICTA4H	2 draw micro with top	467	595	715	1.0 l/meter
	2MICUA4H	2 draw micro undercounter no top	467	595	699	1.0 l/meter
	3MICTA4H	3 draw micro	467	595	969	1.5 l/meter
	4MICTA4H	4 draw micro	467	595	1217	1.9 l/meter
	5MICTA4H	5 draw micro	467	595	1465	2.4 l/meter
	6MICTA4H	6 draw micro	467	595	1721	2.9 l/meter
<b>MINI - 798mm WIDE</b>						
	2MNITA4H	2 draw mini with top	798	595	715	1.4 l/meter
	2MNIUA4H	2 draw mini undercounter no top	798	595	699	1.4 l/meter
	3MNITA4H	3 draw mini	798	595	969	2.0 l/meter
	4MNITA4H	4 draw mini	798	595	1217	2.7 l/meter
	5MNITA4H	5 draw mini	798	595	1465	3.4 l/meter
	6MNITA4H	6 draw mini	798	595	1721	4.0 l/meter
<b>MACRO - 1205mm WIDE</b>						
	2MACTA4H	2 draw macro with top	1205	595	715	2.9 l/meter
	2MACUA4H	2 draw macro undercounter no top	1205	595	699	2.9 l/meter
	3MACTA4H	3 draw macro	1205	595	969	4.3 l/meter
	4MACTA4H	4 draw macro	1205	595	1217	5.7 l/meter
	5MACTA4H	5 draw macro	1205	595	1465	7.2 l/meter
	6MACTA4H	6 draw macro	1205	595	1721	8.6 l/meter

Capacity in cabinet - values are expressed to 1 decimal point

## Foolscap suspended pockets



Foolscap suspended pocket


	Code	Description	Width (mm)	Depth (mm)	Height (mm)	Capacity in Cabinet
<b>MICRO - 467mm WIDE</b>						
	2MICTFSH	2 draw micro with top	467	595	715	0.9 l/meter
	2MICUFSH	2 draw micro undercounter no top	467	595	699	0.9 l/meter
	3MICTFSH	3 draw micro	467	595	969	1.3 l/meter
	4MICTFSH	4 draw micro	467	595	1217	1.7 l/meter
	5MICTFSH	5 draw micro	467	595	1465	2.1 l/meter
	6MICTFSH	6 draw micro	467	595	1721	2.5 l/meter
<b>MINI - 798mm WIDE</b>						
	2MNITFSH	2 draw mini with top	798	595	715	1.4 l/meter
	2MNIUFSH	2 draw mini undercounter no top	798	595	699	1.4 l/meter
	3MNITFSH	3 draw mini	798	595	969	2.0 l/meter
	4MNITFSH	4 draw mini	798	595	1217	2.7 l/meter
	5MNITFSH	5 draw mini	798	595	1465	3.4 l/meter
	6MNITFSH	6 draw mini	798	595	1721	4.0 l/meter
<b>FOLIO - 1330mm WIDE</b>						
	2FOLTFSH	2 draw folio with top	1330	595	715	2.9 l/meter
	2FOLUFSH	2 draw folio undercounter no top	1330	595	699	2.9 l/meter
	3FOLTFSH	3 draw folio	1330	595	969	4.3 l/meter
	4FOLTFSH	4 draw folio	1330	595	1217	5.7 l/meter
	5FOLTFSH	5 draw folio	1330	595	1465	7.2 l/meter
	6FOLTFSH	6 draw folio	1330	595	1721	8.6 l/meter

Capacity in cabinet - values are expressed to 1 decimal point


## Lever Arch Files




Lever Arch File

	Code	Description	Width (mm)	Depth (mm)	Height (mm)	Capacity in Cabinet
<b>MICRO - 467mm WIDE</b>						
	2MICTARC	2 draw micro	467	595	681	12 files
	2MICTARC	3 draw micro	467	595	981	18 files
	4MICTARC	4 draw micro	467	595	1281	24 files
	5MICTARC	5 draw micro	467	595	1565	30 files

	Code	Description	Width (mm)	Depth (mm)	Height (mm)	Capacity in Cabinet
<b>MINI - 798mm WIDE</b>						
	2MNITARC	2 draw mini	798	595	681	24 files
	3MNITARC	3 draw mini	798	595	981	36 files
	4MNITARC	4 draw mini	798	595	1281	48 files
	5MNITARC	5 draw mini	798	595	1565	60 files

	Code	Description	Width (mm)	Depth (mm)	Height (mm)	Capacity in Cabinet
<b>MACRO - 1205mm WIDE</b>						
	2MACTARC	2 draw macro	1205	595	681	36 files
	3MACTARC	3 draw macro	1205	595	981	54 files
	4MACTARC	4 draw macro	1205	595	1281	72 files
	5MACTARC	5 draw macro	1205	595	1565	90 files

## A5 containers

	Code	Description	Width (mm)	Depth (mm)	Height (mm)	Capacity in Cabinet
<b>MAXI - 1128mm WIDE</b>						
	3MAXPTA5C	3 draw maxi	1128	595	715	72 x A5 Cont.
	5MAXPTA5C	5 draw maxi	1128	595	1048	120 x A5 Cont.
	7MAXPTA5C	7 draw maxi	1128	595	1465	168 x A5 Cont.
	8MAXPTA5C	8 draw maxi	1128	595	1611	192 x A5 Cont.

## Compact discs

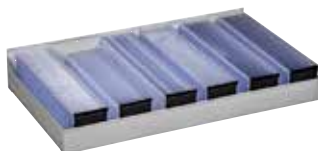
Code	Description	Width (mm)	Depth (mm)	Height (mm)	Capacity in Cabinet
<b>MICRO - 467mm WIDE</b>					
3MICPTCD	3 draw micro	467	595	715	300 x CD's
5MICPTCD	5 draw micro	467	595	1048	500 x CD's
7MICPTCD	7 draw micro	467	595	1465	700 x CD's
8MICPTCD	8 draw micro	467	595	1611	800 x CD's



<b>MINI - 798mm WIDE</b>					
3MNIPTCD	3 draw mini	798	595	715	600 x CD's
5MNIPTCD	5 draw mini	798	595	1048	1000 x CD's
7MNIPTCD	7 draw mini	798	595	1465	1400 x CD's
8MNIPTCD	8 draw mini	798	595	1611	1600 x CD's



<b>MAXI - 1128mm WIDE</b>					
3MAXPTCD	3 draw maxi	1128	595	715	900 x CD's
5MAXPTCD	5 draw maxi	1128	595	1048	1500 x CD's
7MAXPTCD	7 draw maxi	1128	595	1465	2100 x CD's
8MAXPTCD	8 draw maxi	1128	595	1611	2400 x CD's



## Government size containers

<b>MACRO - 1205mm WIDE</b>					
2MACPTGVC	2 draw macro with top	1205	595	715	30 x Gov. Cont.
2MACPUGVC	2 draw macro undercover no top	1205	595	699	30 x Gov. Cont.
3MACPTGVC	3 draw macro	1205	595	969	45 x Gov. Cont.
4MACPTGVC	4 draw macro	1205	595	1217	60 x Gov. Cont.
5SMACPTGVC	5 draw short macro	1205	595	1305	75 x Gov. Cont.
5MACPTGVC	5 draw macro	1205	595	1465	75 x Gov. Cont.
6MACPTGVC	6 draw macro	1205	595	1584	90 x Gov. Cont.



## Foolscap size containers

<b>FOLIO - 1330mm WIDE</b>					
2FOLPTFLC	2 draw folio with top	1330	595	715	30 x F/scap Cont.
2FOLPUFLC	2 draw folio undercover no top	1330	595	699	30 x F/scap Cont.
3FOLPTFLC	3 draw folio	1330	595	969	30 x F/scap Cont.
4FOLPTFLC	4 draw folio	1330	595	1217	60 x F/scap Cont.
5SFOLPTFLC	5 draw short folio	1330	595	1350	75 x F/scap Cont.
5FOLPTFLC	5 draw folio	1330	595	1465	75 x F/scap Cont.
6FOLPTFLC	6 draw folio	1330	595	1584	90 x F/scap Cont.



### Internal components

- **Cradle for suspended pockets**
- **Utility drawer**
  - Available for the mini and standard size.
  - Used to elevate the sides and back of the drawer to the same height as the front of the drawer.
  - Does not include the base plates required to close the bottom of the drawer.
- **Metal base plate**
  - Used to close the bottom of the drawer.
- **Record ring**
  - Used in instances when the client elects not to make use of containers within the cabinet, and uses the record ring to hold the files in an upright position.
  - Accommodates the files from front to back in the cabinet.
  - In most instances to be used in conjunction with a metal base plate.
- **Vacuum formed pen and pencil tray**
  - Generally used in a shallow drawer to accommodate pens, pencils, paper clips etc.



16mm square top  
(standard)

32mm square top  
(optional)



Cradle for suspended pockets

# MAKE YOUR SPACE WORK FOR YOU.

Toll Free 0861 MRSHELF or 0861 677435  
[www.mrshelf.co.za](http://www.mrshelf.co.za)

**MR. SHELF**