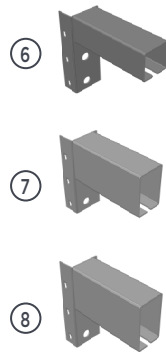
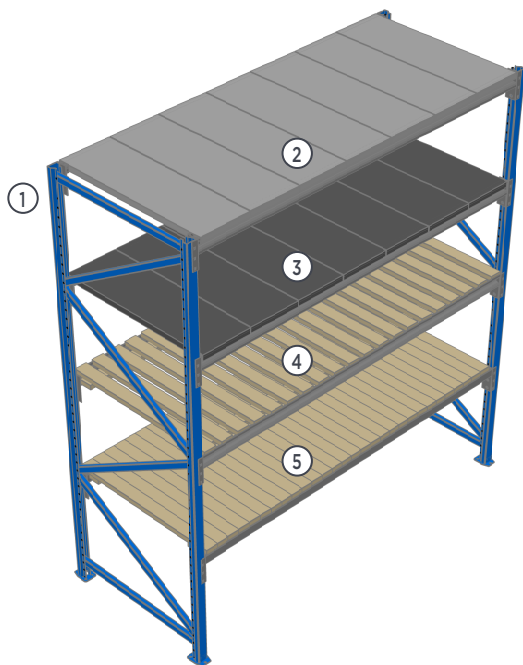


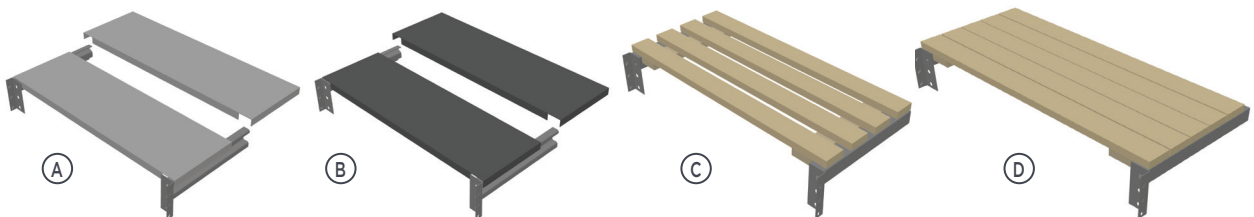
LIGHT DUTY RACKING

Light Duty Racking is ideal for bulky light weight hand packed goods. A range of frame and beam sizes are also available in Powder Coated steel or Galvanised Steel.



Legend

- ① Racking End Frame
- ② Galvanised Steel Deck
- ③ Powder Coated Steel Deck
- ④ Pine Deck - Open
- ⑤ Pine Deck - Closed
- ⑥ 50mm Open Beam
- ⑦ 60mm Open Beam
- ⑧ 75mm Open Beam

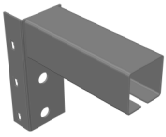


Decking Options

- ① Galvanised Steel Deck
- ② Powder Coated Steel Deck
- ③ Pine Deck - Slated
- ④ Pine Deck - Closed

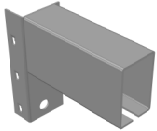
Support Beams

50mm Open Beams



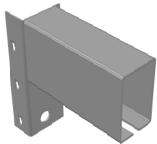
Beam Length mm						
900	1200	1500	1800	2100	2400	2700
Beam Loading max. kg per pair of beams - UDL (Uniformly Distributed Load)						
800	750	678	527	380	290	224

60mm Open Beams



Beam Length mm			
1500	1800	2100	2400
Beam Loading max. kg per pair of beams - UDL (Uniformly Distributed Load)			
800	750	670	520

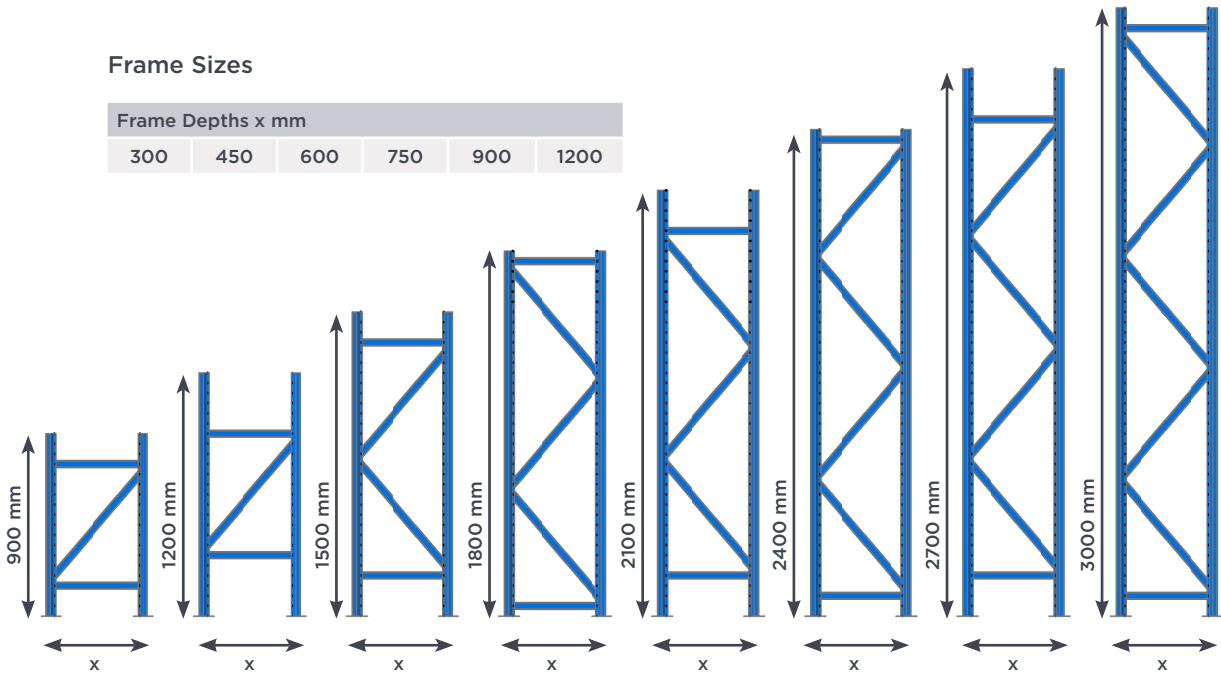
75mm Open Beams



Beam Length mm	
2400	2700
Beam Loading max. kg per pair of beams - UDL (Uniformly Distributed Load)	
800	750

Frame Sizes

Frame Depths x mm					
300	450	600	750	900	1200



MAKE YOUR SPACE WORK FOR YOU.

Toll Free 0861 MRSHELF or 0861 677435
www.mrshef.co.za

MR. SHELF